

Demount First Bead



Break and lube both beads. Lay tire on floor with short side up.



Hold curved part of **large end**, with the tip facing up, behind you.



Keeping fingers out of the area **between** tool and tire/wheel, fully insert **small end**, between rim and tire bead nearest you, in top bead of tire.



Lift **large end**. (*Improper lifting will cause the tool to roll*)



Step through the wheel and pull tool across center of wheel.



Push tool down to opposite side. First bead is now demounted. Remove tool from wheel. **Do not pick up tire/wheel.**

Demount Second Bead



Fully insert **large end** into gap between wheel and tire until you feel bottom bead.



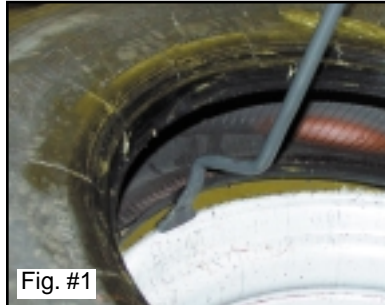
Lift **small end**, step through the wheel and pull tool across center of wheel.



Push tool down to opposite side. Tire is now fully demounted.

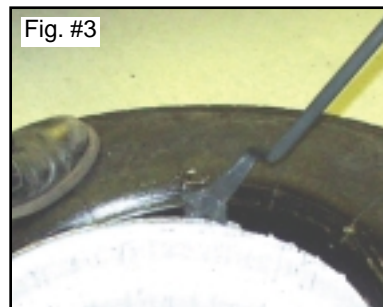
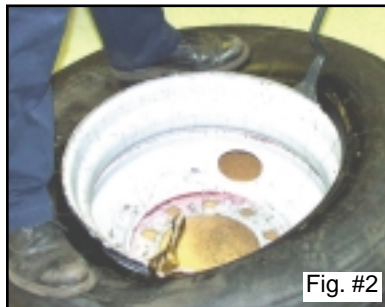
Serpent™ T2002 #35450 Mount Tool

Mount First Bead



Mounting: Insert valve stem. Lubricate both bead seats of the rim and both tire beads. Push lower bead over flange and into rim well. Using the wing shaped end of tire iron with stop resting on rim flange, pry tire over flange, starting where tire bead crosses rim flange. Repeat progressively around tire working with small sections until the tire is completely over the rim. By rocking the tool sideways onto the wing, the tip will release itself from the rim and bead. (See figure #3 below)

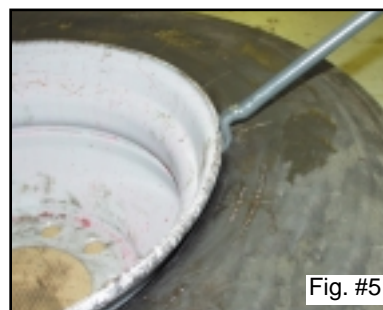
Mount Second Bead



⚠ WARNING

Always wear eye protection when servicing tires and wheels and whenever using hand tools. Always use soft-faced hammers when driving tire irons. Never use one hammer to strike another hammer. Never use a hammer with loose or cracked handle. Never use a dented, cracked, chipped, mushroomed, or deformed tool. Never use a tire tool for anything except mounting/demounting tires.

Stand on the tire to push a section of the bead over the flange and into the well. When using this tool, a bead keeper (#31710) is recommended to hold the bead in place. (See figure #2) While standing on the tire, insert the wing shaped end of the tire iron between the tire bead and rim flange. Push the tire bead over the rim flange opposite where the tire is already in the well. Repeat this step taking small sections of the bead until the last section is pried over the rim flange until tire is mounted.



The small end of the tool easily gets under the stretched bead for that last pull.

SAFETY WARNING: If you don't know how to use tire changing tools - STOP! Tire changing should only be done by trained persons. If you do it wrong, you could be hurt or killed. For complete tire servicing procedures, read the tire and rim makers' service manuals. You can also get free wall charts about tire servicing by calling OSHA at 1-202-523-9667.