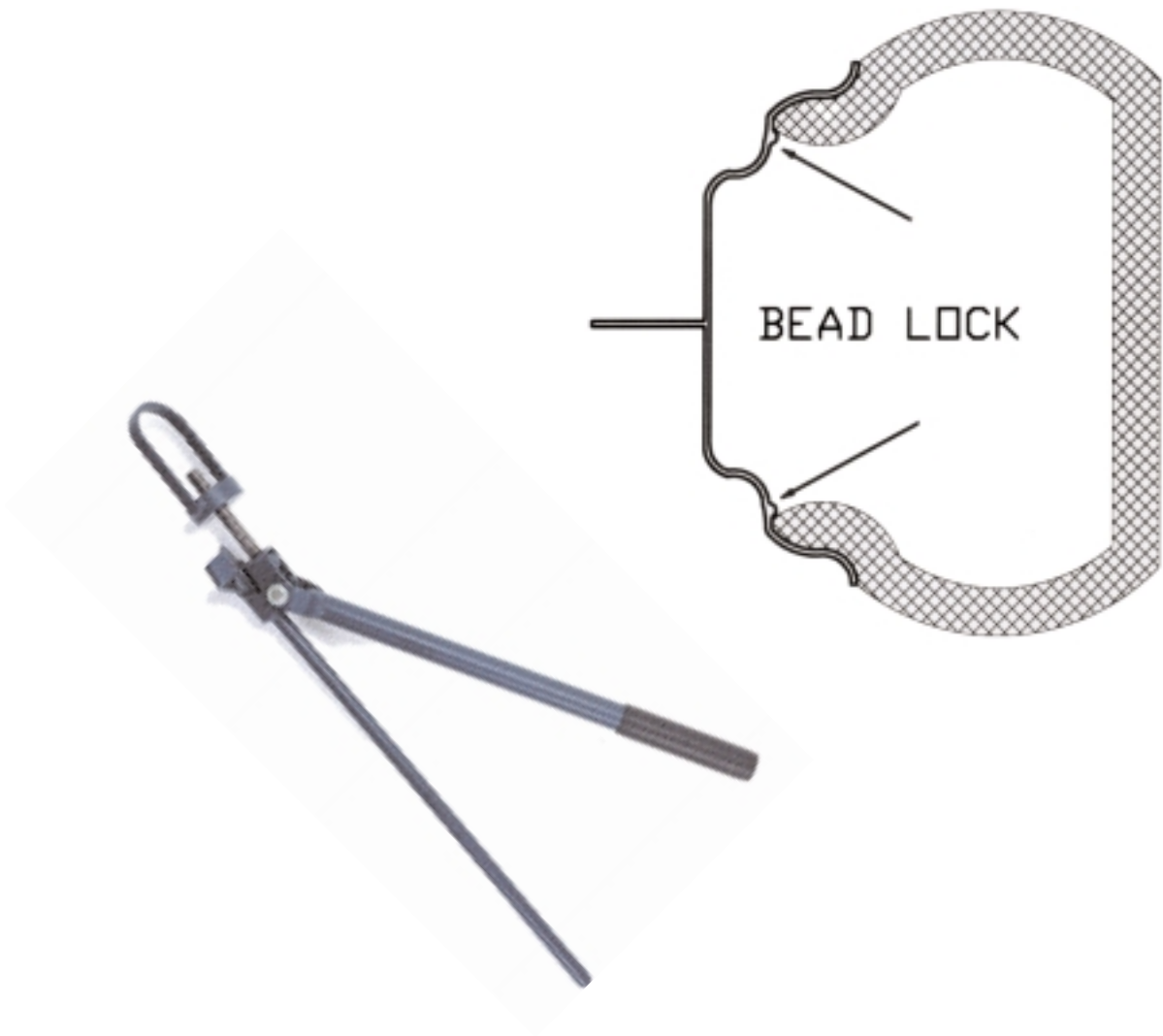


ATV BEAD BREAKER

MODEL # 38620 ATV BEAD BREAKER
For use on tires 4" to 12"

CAUTION: Read Manual Completely and Carefully for Safe Operation
Before Using This Tool.



#38620
ATV BEAK BREAKER
Table of Contents

Safety Precautions	Page 2
Warranty Information	Page 3
Replacement Parts and Illustration	Page 3
Instructions for Operation	Page 4

IMPORTANT SAFETY PRECAUTIONS FOR
CHANGING TIRES

READ ENTIRE SAFETY PRECAUTIONS AND INSTRUCTION MANUAL BEFORE CHANGING ANY TIRES WITH THIS UNIT. IMPROPER USE MAY LEAD TO TIRE DAMAGE OR COMPLETE DESTRUCTION OF THE BEAD BREAKER OR TIRE CHANGING MACHINE.

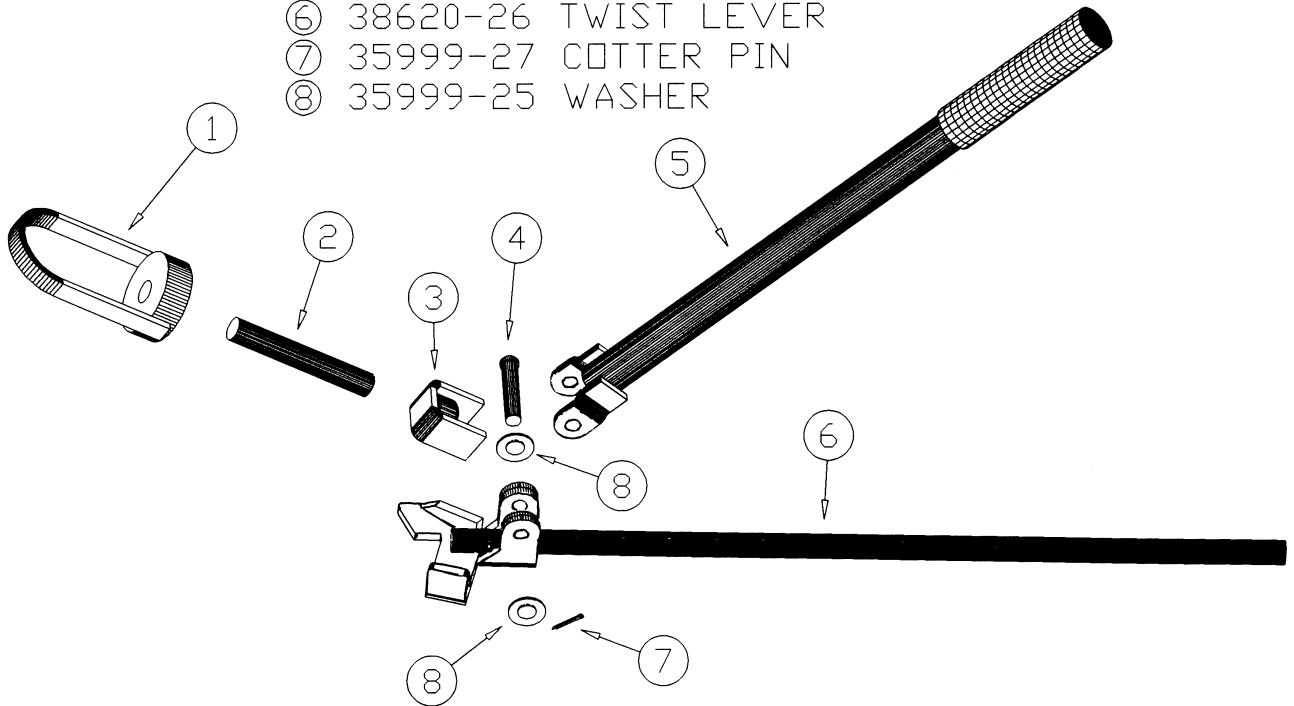
WARNING : If you do not know how to use tire-changing tools -- STOP! Tire changing should only be done by trained persons. Improper tire changing can result in injury or death.

Here are some safety rules to follow before using *THE ATV BEAD BREAKER*:

- 1.) Always wear approved safety eye protection when servicing tires and wheels and whenever using hand tools.
- 2.) Follow all tire and rim manufacturers' instructions when changing and inflating tires. Ensure that tire and rim sizes match. Mismatched components can cause serious injury during inflation.
- 3.) Never use this tool for anything except breaking a tire bead away from the rim. Don't use a tool for a purpose for which it was not intended.
- 4.) Always check for damaged or broken parts. Check for other conditions that may affect its operation. Do not use damaged parts.
- 5.) Completely deflate tire before attempting to break the bead. This requires removing the valve core and probing the valve with a wire to remove any obstructions which may prevent air from escaping.
- 6.) Keep work area clean. Cluttered areas invite injuries.
- 7.) Don't overreach. Keep proper footing and balance at all times.
- 8.) Always use tire bead lubrication when mounting or demounting any tire.

Replacement Parts / Illustration

- ① 38620-28 MOUNTING COLLAR
- ② 38620-06 ALLTHREAD
- ③ 38620-27 YOKE
- ④ 38620-02 CLEVIS PIN
- ⑤ 38620-31 BREAK LEVER
- ⑥ 38620-26 TWIST LEVER
- ⑦ 35999-27 COTTER PIN
- ⑧ 35999-25 WASHER



Also available is an instructional video on Ken-Tool's complete Small Tire Changing System, including the ATV Bead Breaker and other tools. To receive this instructional video, send a check or money order for \$9.95 to:

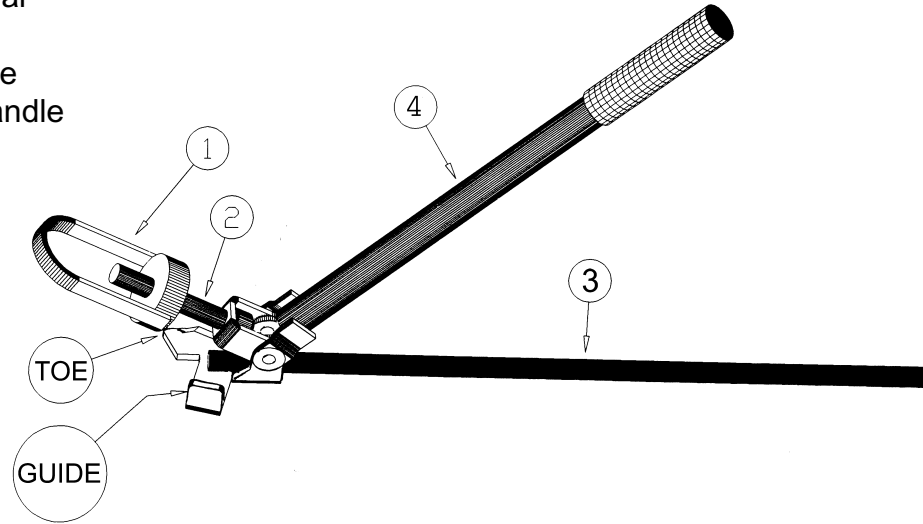
Ken-Tool Tire Changing Video
768 E. North Street
P.O. Box 9320
Akron, OH 44305
Phone: 330-535-7177

Warranty

Ken-Tool products are guaranteed for fitness and merchantability. Any tool, where adjustment is asked for, should be returned to the place of purchase provided it has not been abused, heated, ground, subjected to unreasonable leverage, or has worn out in normal usage. This ATV Bead Breaker #38620, is warranted for one year from date of purchase. Sales receipt is required as proof of purchase.

Bead Breaker Directions

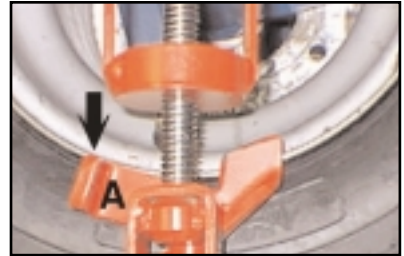
- 1.) Mounting Collar
- 2.) All Thread
- 3.) Bottom Handle
- 4.) Black Grip Handle



Remove valve core and place ATV tire and rim assembly on any sturdy, center-post, tire-changing machine (we recommend Ken-Tool 38600 or 38601 series). Center the tire and secure the rim to the tire-changing machine.



Hold both handles of the ATV Bead Breaker in your left hand. With your right hand, lower the adjustable, mounting collar over the center-post of the tire-changing machine. Hold both handles horizontal and look downward to check the tool alignment.



Align the edge of guide (A) with the edge of the outer-flange of the wheel (see above diagram for proper placement).



To adjust the breaker, remove the tool from the center-post and rotate the mounting collar. Replace the mounting collar over the center-post and re-examine the alignment. Repeat if necessary. It is important that the edge of the guide rests next to the outer flange.



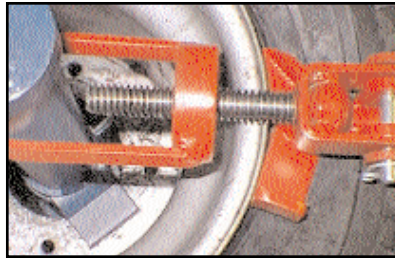
If the guide is not properly positioned (see above diagram), the tool may slip out from under the rim or cause damage to either the bead or sidewall of the tire during use. Once properly adjusted, LUBRICATE THE ENTIRE BEAD AREA (Ken-Tool recommends Bead-Eze). This is particularly important to provide a gliding effect as the bead breaker is moved around the tire, and to prevent damage to the tire.



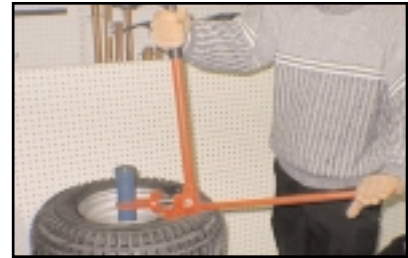
After the guide is properly positioned, hold both handles in your left hand. Push down on the sidewall with your right hand. This provides a "starting place" for insertion of the tool. Raise both handles and slide the toe between the rim and bead. Keep your right hand clear of the insertion area to avoid pinching.



Once the toe is securely placed between the rim and bead, lower the handles to the horizontal position.



At this point, the toe should still be between the rim and bead, and the guide should rest against the outer flange. With the handles and mounting collar in a horizontal position, lift the black handled grip as shown.



Your **LEFT** hand should be placed on the bottom handle. **DO NOT** apply much pressure to the bottom handle. If too much force is applied to the bottom handle, bead breaking will be more difficult and damage to the center-post may result.



After the top handle has been raised to a vertical position and your left hand has been placed on the bottom handle, pull the black handle grip toward you in a clockwise fashion to about 45°. The left hand should remain on bottom handle to provide stability **NOT** pressure. (This tool can be used in one direction only. You must have your left hand on the bottom handle and the ATV bead breaker on the left side of your body during operation).



Take note that everything rotates except the mounting collar. This motion pushes the bead below the bead lock on the rim assembly. Relube in to the open gap between the bead and rim.



Finally rotate the black handle back to the vertical position. With the bottom handle still horizontal reposition the bead breaker at another point clockwise along the rim by moving to the left a few inches from the last point. Repeat the rotation step, as necessary until bead is broken. Avoid disengaging the toe from the underside of the rim during this rotation.



Once bead is completely broken from the rim lock, lift both handles together and disengage the breaker under the rim.



Next, lift the mounting collar and bead breaker off the center-post. Repeat the entire process after the tire has been lifted off the tire-changing machine and opposite side is facing upward.



If you are using the Ken-Tool Small Tire Changing Machine, take the Tire Snake and demount the tire. Repair or replace tire and mount tire on rim with the ATV Tire Snake.